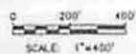


THE SPIRES BROADMOOR DRAINAGE HOMEOWNER'S ASSOCIATION
 REVISED DRAINAGEWAY RESPONSIBILITIES



LEGEND

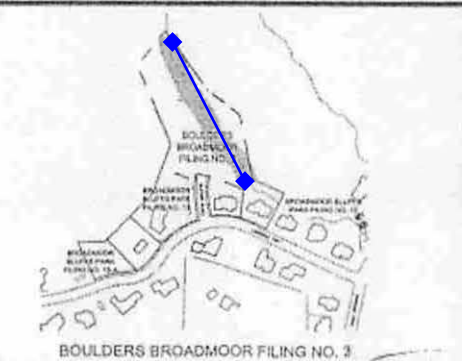
-  CITY MAINTAINED DRAINAGEWAYS
-  HOA MAINTAINED DRAINAGEWAYS



OFFSITE DEBRIS FLOW BASINS ARE LOCATED WEST OF SPIRES BROADMOOR FILING NO. 1



BOULDERS BROADMOOR FILING NO. 1, 1A, 1B, & 1C



BOULDERS BROADMOOR FILING NO. 2

THE SPIRES BROADMOOR DRAINAGE HOA SHALL MAINTAIN UNDERDRAINS IN THE FOLLOWING SUBDIVISIONS:
 SPIRES BROADMOOR FILING NO. 1
 SPIRES BROADMOOR FILING NO. 2
 STONECLIFF FILING NO. 6
 STONECLIFF FILING NO. 6A
 BOULDERS BROADMOOR FILING NO. 1
 BOULDERS BROADMOOR FILING NO. 1A
 BOULDERS BROADMOOR FILING NO. 1B
 BOULDERS BROADMOOR FILING NO. 1C
 BOULDERS BROADMOOR FILING NO. 2
 BOULDERS BROADMOOR FILING NO. 3
 & ANY SUBSEQUENT REPLATS

CITY MAINTAINED, EXCEPT FOR AREAS OUTSIDE (SHAD) (SEE MAINTAINED)

BOULDERS BROADMOOR FILING NO. 2 & 5
 STONECLIFF FILING NO. 8 & 8A
 SPIRES BROADMOOR FILING NO. 1 & 2

THE HOA HAS RESPONSIBILITIES IN ADDITION TO DRAINAGE. FOR A LIST OF THESE RESPONSIBILITIES, CONTACT THE HOA BOARD OF DIRECTORS.